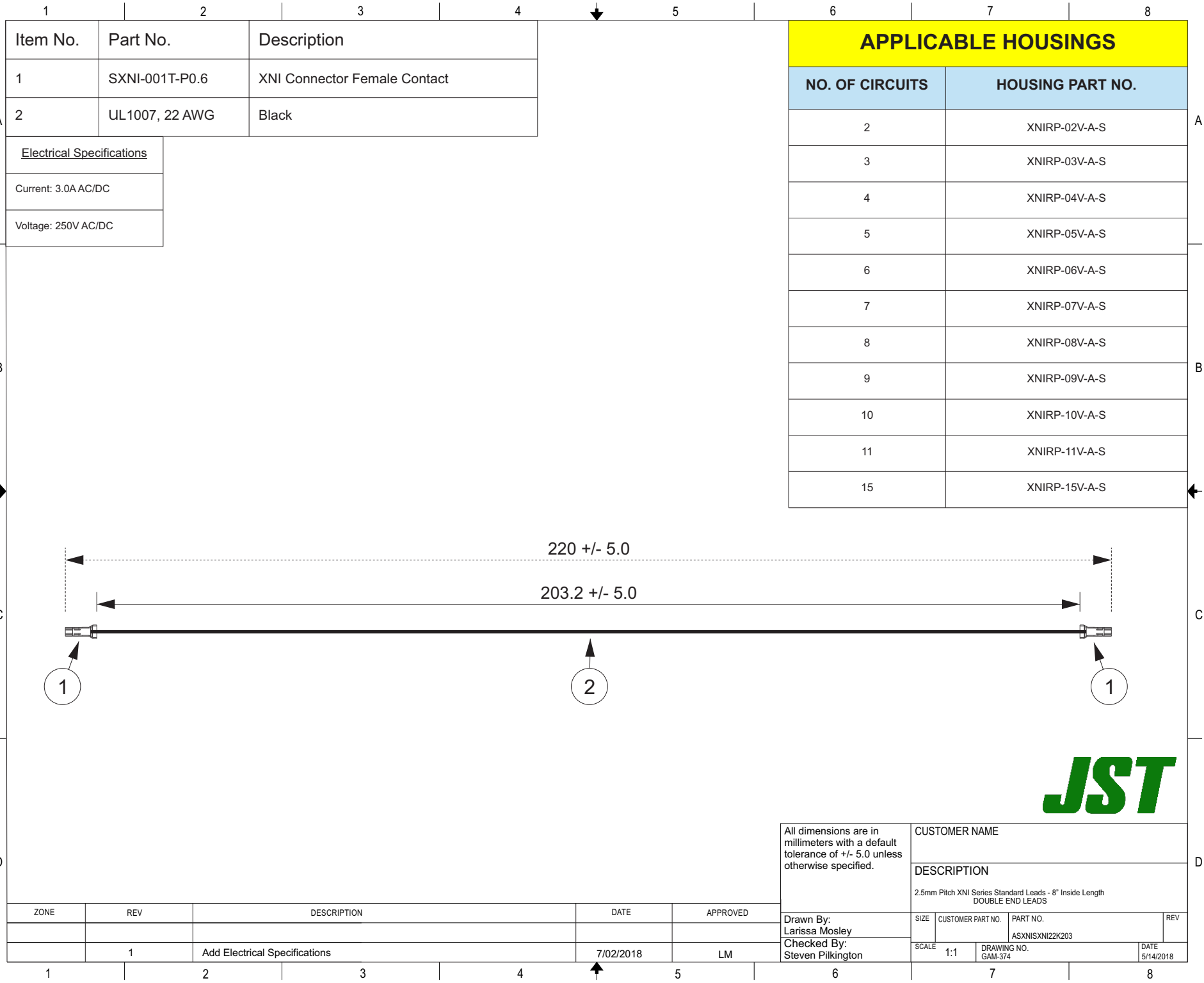


THIS DRAWING CONTAINS INFORMATION THAT IS PROPRIETARY TO J.S.T. AND SHALL NOT BE USED OR SHOWN WITHOUT WRITTEN PERMISSION.



Item No.	Part No.	Description
1	SXNI-001T-P0.6	XNI Connector Female Contact
2	UL1007, 22 AWG	Black

Electrical Specifications
Current: 3.0AAC/DC
Voltage: 250V AC/DC

APPLICABLE HOUSINGS	
NO. OF CIRCUITS	HOUSING PART NO.
2	XNIRP-02V-A-S
3	XNIRP-03V-A-S
4	XNIRP-04V-A-S
5	XNIRP-05V-A-S
6	XNIRP-06V-A-S
7	XNIRP-07V-A-S
8	XNIRP-08V-A-S
9	XNIRP-09V-A-S
10	XNIRP-10V-A-S
11	XNIRP-11V-A-S
15	XNIRP-15V-A-S

ZONE	REV	DESCRIPTION	DATE	APPROVED
	1	Add Electrical Specifications	7/02/2018	LM

All dimensions are in millimeters with a default tolerance of +/- 5.0 unless otherwise specified.

CUSTOMER NAME

DESCRIPTION
2.5mm Pitch XNI Series Standard Leads - 8" Inside Length
DOUBLE END LEADS

Drawn By: Larissa Mosley	SIZE	CUSTOMER PART NO.	PART NO.	REV
Checked By: Steven Pilkington	SCALE 1:1	DRAWING NO. GAM-374	ASXNISXNI22K203	DATE 5/14/2018

