

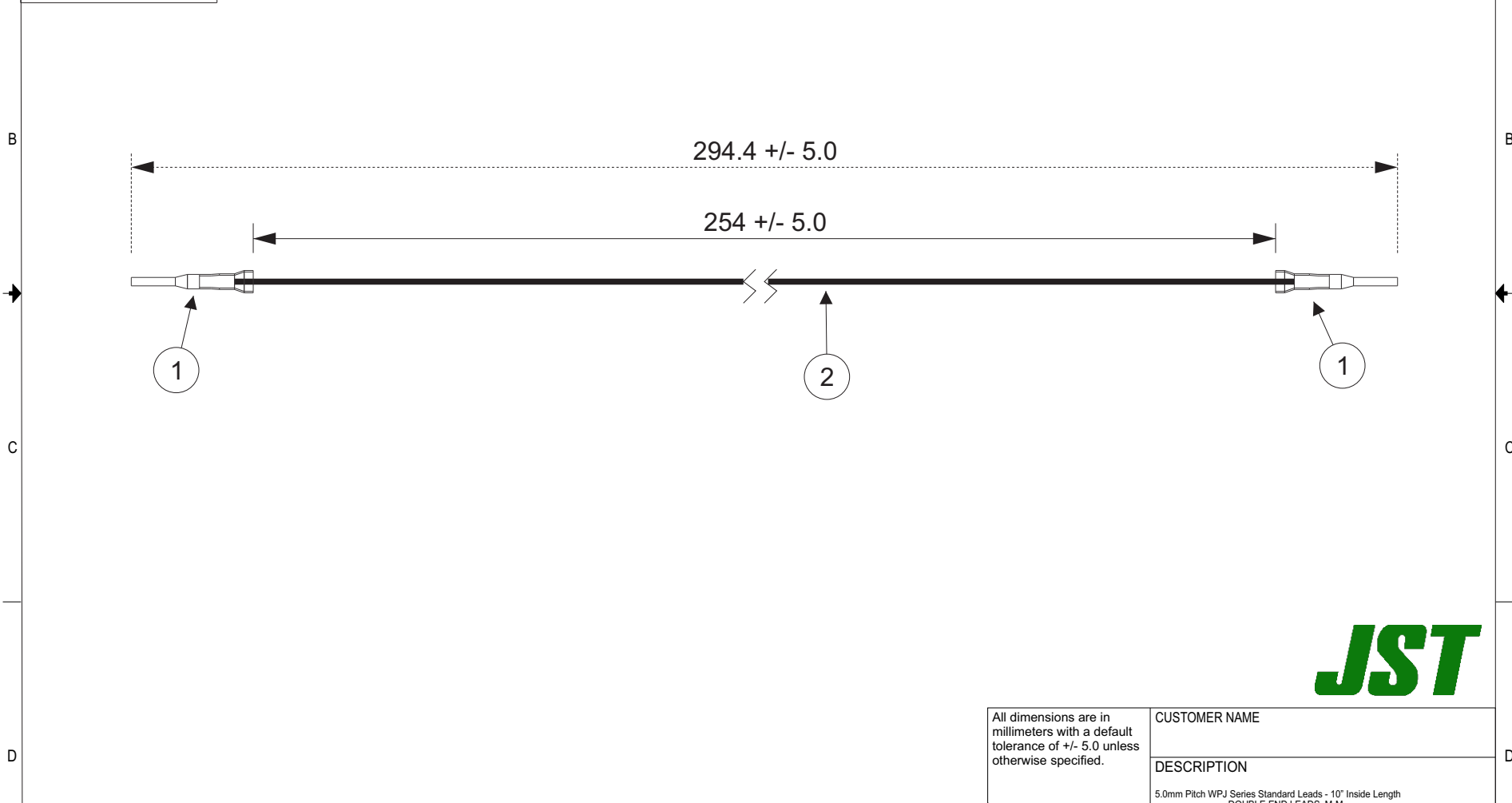
THIS DRAWING CONTAINS INFORMATION THAT IS PROPRIETARY TO J.S.T. AND SHALL NOT BE USED OR SHOWN WITHOUT WRITTEN PERMISSION.

Item No.	Part No.	Description
1	SWPJT-21T-P0.5	WPJ Connector Contact
2	UL1015, 18 AWG	Black

Electrical Specifications
Current: 7.0A AC/DC
Voltage: 300V AC/DC

APPLICABLE HOUSINGS

NO. OF CIRCUITS	HOUSING PART NO.
2	02T-WPJV-1-SM
3	03T-WPJV-1-SM



All dimensions are in millimeters with a default tolerance of +/- 5.0 unless otherwise specified.		CUSTOMER NAME			
		DESCRIPTION 5.0mm Pitch WPJ Series Standard Leads - 10" Inside Length DOUBLE END LEADS, M-M			
Drawn By: Larissa Mosley	Checked By: Steven Pilkington	SIZE	CUSTOMER PART NO.	PART NO.	REV
SCALE 1:1		DRAWING NO. GAM-432	PART NO. AWP_WPJ18K254T		DATE 5/24/2018

ZONE	REV	DESCRIPTION	DATE	APPROVED
	1	Add Electrical Specifications	7/02/2018	LM