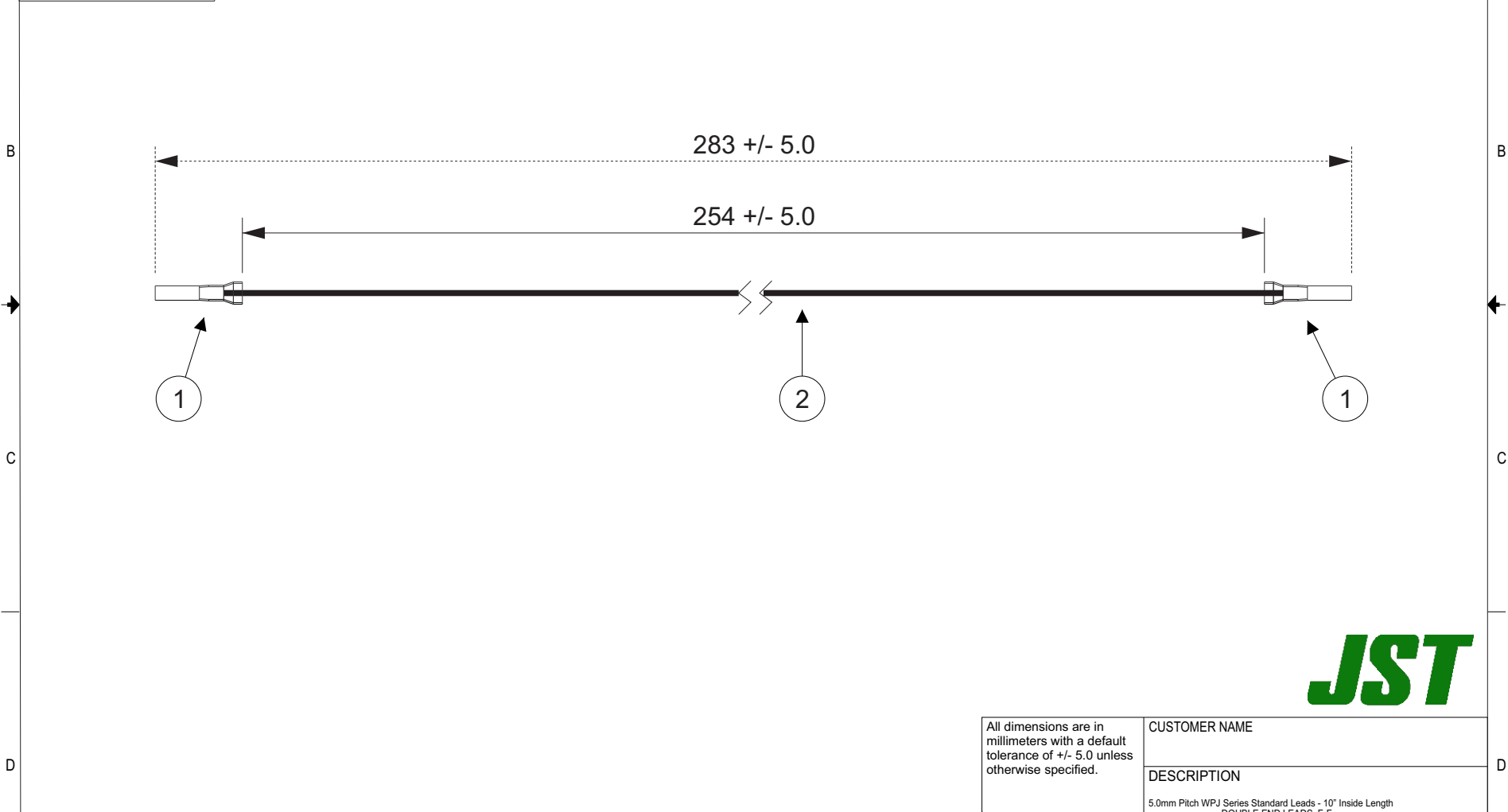


THIS DRAWING CONTAINS INFORMATION THAT IS PROPRIETARY TO J.S.T. AND SHALL NOT BE USED OR SHOWN WITHOUT WRITTEN PERMISSION.

Item No.	Part No.	Description
1	SWPJR-21T-M0.5	WPJ Connector Contact
2	UL1015, 18 AWG	Black

Electrical Specifications
Current: 7.0AAC/DC
Voltage: 300V AC/DC

APPLICABLE HOUSINGS	
NO. OF CIRCUITS	HOUSING PART NO.
2	02R-WPJV-1-SMM
3	03R-WPJV-1-SMM



All dimensions are in millimeters with a default tolerance of +/- 5.0 unless otherwise specified.		CUSTOMER NAME	
Drawn By: Larissa Mosley		DESCRIPTION	
Checked By: Steven Pilkington		5.0mm Pitch WPJ Series Standard Leads - 10° Inside Length DOUBLE END LEADS, F-F	
SIZE	CUSTOMER PART NO.	PART NO.	REV
SCALE	DRAWING NO.	DATE	
1:1	GAM-435	5/25/2018	

ZONE	REV	DESCRIPTION	DATE	APPROVED
	1	Add Electrical Specifications	7/02/2018	LM

1 2 3 4 5 6 7 8