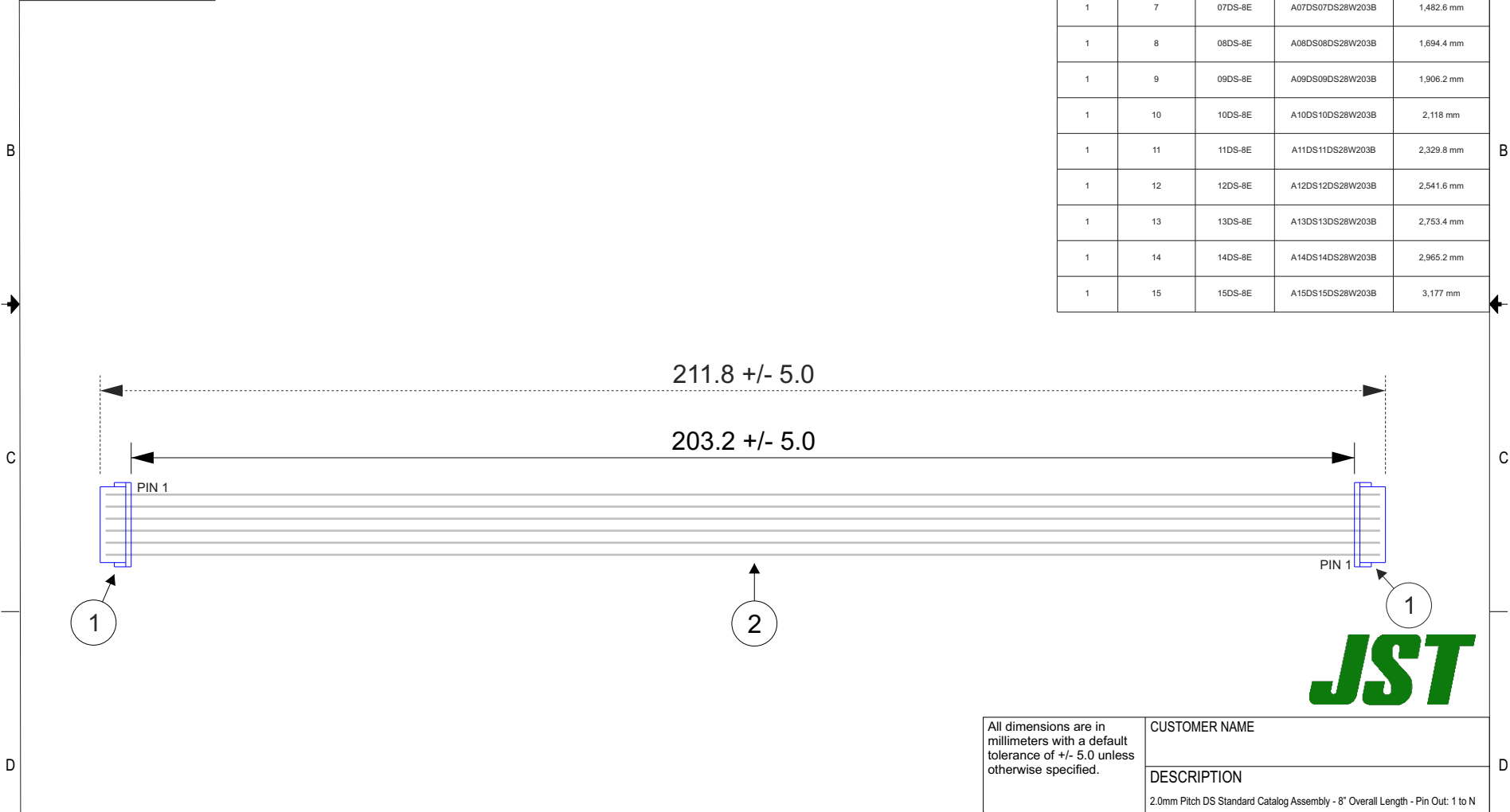


THIS DRAWING CONTAINS INFORMATION THAT IS PROPRIETARY TO J.S.T. AND SHALL NOT BE USED OR SHOWN WITHOUT WRITTEN PERMISSION.

Item No.	Part No.	Description
1	See Table 1	DS Connector
2	UL1061, 28 AWG	White
<u>Electrical Specifications</u>		
Current: 0.7A AC/DC		
Voltage: 100V AC/DC		

TABLE 1				
ITEM	NUMBER OF CIRCUITS	CONNECTOR PART NO.	ASSEMBLY PART NO.	TOTAL WIRE REQUIRED
1	2	02DS-8E	A02DS02DS28W203B	423.6 mm
1	3	03DS-8E	A03DS03DS28W203B	635.4 mm
1	4	04DS-8E	A04DS04DS28W203B	847.2 mm
1	5	05DS-8E	A05DS05DS28W203B	1,059 mm
1	6	06DS-8E	A06DS06DS28W203B	1,270.8 mm
1	7	07DS-8E	A07DS07DS28W203B	1,482.6 mm
1	8	08DS-8E	A08DS08DS28W203B	1,694.4 mm
1	9	09DS-8E	A09DS09DS28W203B	1,906.2 mm
1	10	10DS-8E	A10DS10DS28W203B	2,118 mm
1	11	11DS-8E	A11DS11DS28W203B	2,329.8 mm
1	12	12DS-8E	A12DS12DS28W203B	2,541.6 mm
1	13	13DS-8E	A13DS13DS28W203B	2,753.4 mm
1	14	14DS-8E	A14DS14DS28W203B	2,965.2 mm
1	15	15DS-8E	A15DS15DS28W203B	3,177 mm



ZONE	REV	DESCRIPTION	DATE	APPROVED
	1	Add Electrical Specifications	6/29/2018	LM

All dimensions are in millimeters with a default tolerance of +/- 5.0 unless otherwise specified.					CUSTOMER NAME				
					DESCRIPTION				
					2.0mm Pitch DS Standard Catalog Assembly - 8" Overall Length - Pin Out: 1 to N				
Drawn By: Larissa Mosley		SIZE		CUSTOMER PART NO.		PART NO.		REV	
Checked By: Steven Pilkington		SCALE		DRAWING NO.		SEE TABLE 1		DATE	
		1:1		GAM-532				6/19/2018	