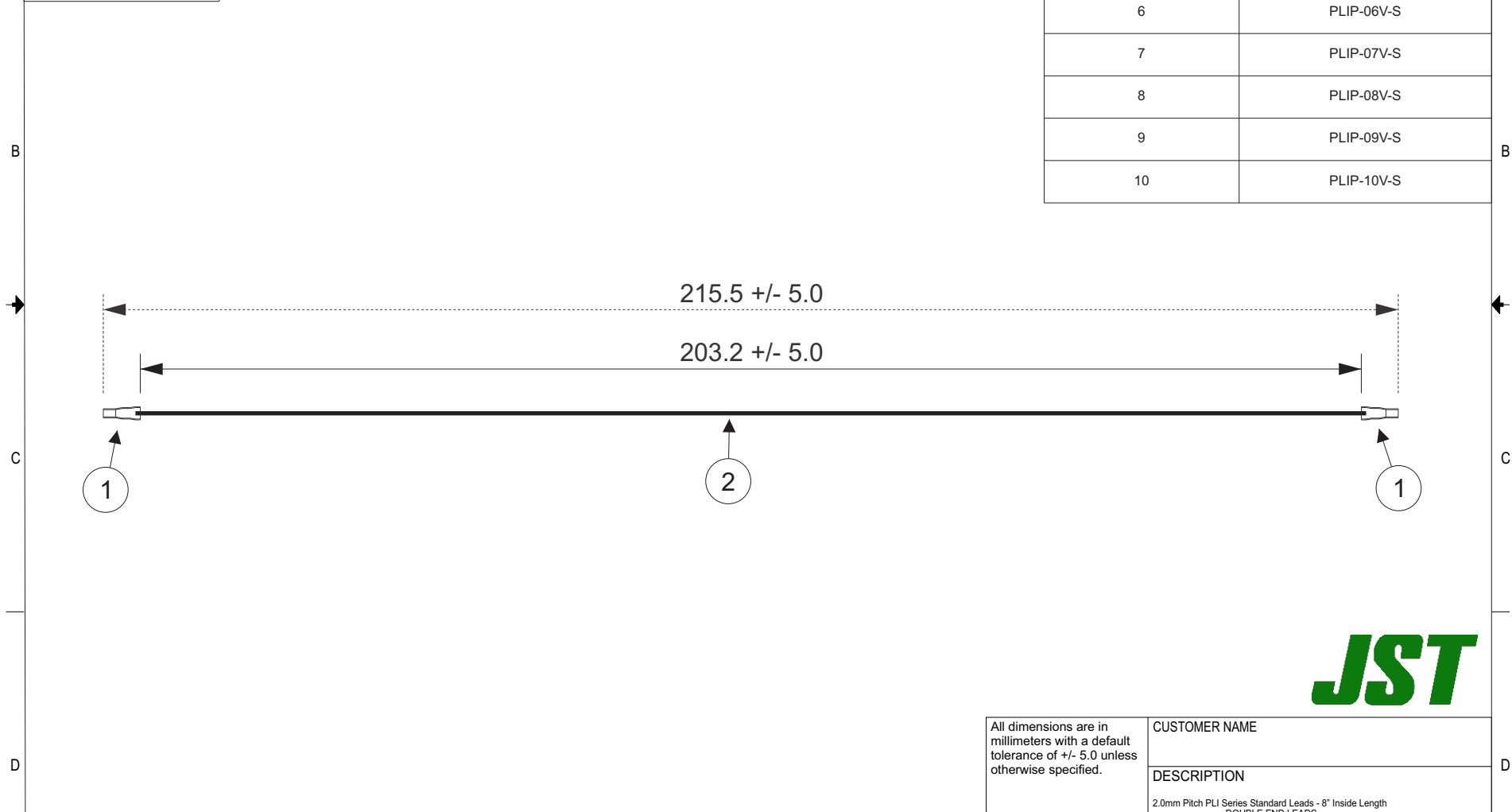


THIS DRAWING CONTAINS INFORMATION THAT IS PROPRIETARY TO J.S.T. AND SHALL NOT BE USED OR SHOWN WITHOUT WRITTEN PERMISSION.

Item No.	Part No.	Description
1	SPLI-001T-P0.5	PLI Connector Contact
2	UL1061, 22 AWG	Black

Electrical Specifications
Current: 3.0AAC/DC
Voltage: 100V AC/DC

APPLICABLE HOUSINGS	
NO. OF CIRCUITS	HOUSING PART NO.
2	PLIP-02V-S
3	PLIP-03V-S
4	PLIP-04V-S
5	PLIP-05V-S
6	PLIP-06V-S
7	PLIP-07V-S
8	PLIP-08V-S
9	PLIP-09V-S
10	PLIP-10V-S



All dimensions are in millimeters with a default tolerance of +/- 5.0 unless otherwise specified.	CUSTOMER NAME		
	DESCRIPTION 2.0mm Pitch PLI Series Standard Leads - 8" Inside Length DOUBLE END LEADS		
Drawn By: Larissa Mosley	SIZE	CUSTOMER PART NO.	PART NO.
Checked By: Steven Pilkington	SCALE	DRAWING NO. GAM-538	DATE 6/20/2018

ZONE	REV	DESCRIPTION	DATE	APPROVED
	1	Add Electrical Specifications	7/02/2018	LM

1 | 2 | 3 | 4 | 5 | 6 | 7 | 8