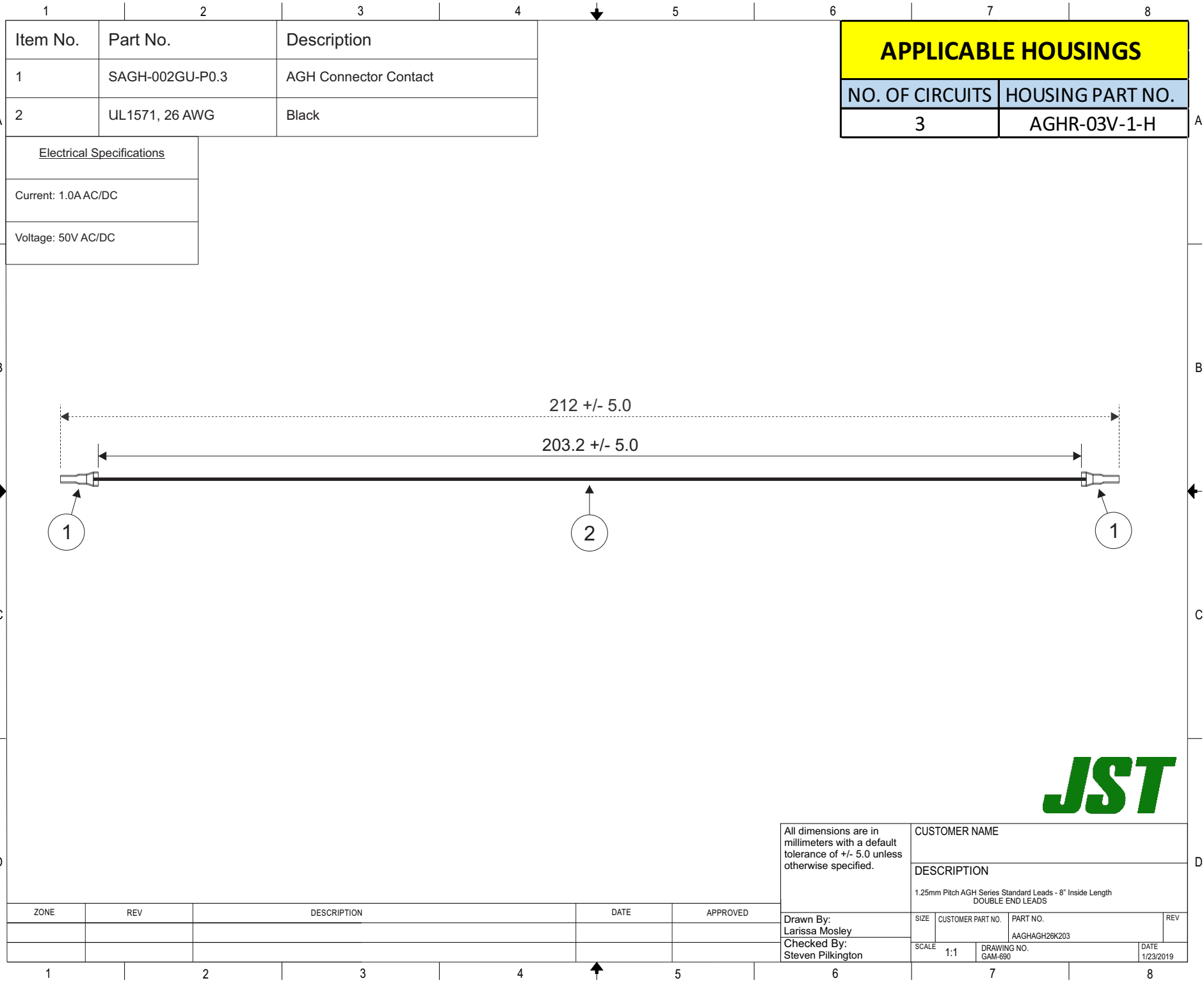


THIS DRAWING CONTAINS INFORMATION THAT IS PROPRIETARY TO J.S.T. AND SHALL NOT BE USED OR SHOWN WITHOUT WRITTEN PERMISSION.



Item No.	Part No.	Description
1	SAGH-002GU-P0.3	AGH Connector Contact
2	UL1571, 26 AWG	Black

Electrical Specifications
Current: 1.0AAC/DC
Voltage: 50V AC/DC

APPLICABLE HOUSINGS	
NO. OF CIRCUITS	HOUSING PART NO.
3	AGHR-03V-1-H

ZONE	REV	DESCRIPTION	DATE	APPROVED

All dimensions are in millimeters with a default tolerance of +/- 5.0 unless otherwise specified.	CUSTOMER NAME			
	DESCRIPTION 1.25mm Pitch AGH Series Standard Leads - 8" Inside Length DOUBLE END LEADS			
Drawn By: Larissa Mosley	SIZE	CUSTOMER PART NO.	PART NO.	REV
Checked By: Steven Pilkington	SCALE 1:1	DRAWING NO. GAM-690	AAGHAGH26K203	DATE 1/23/2019

