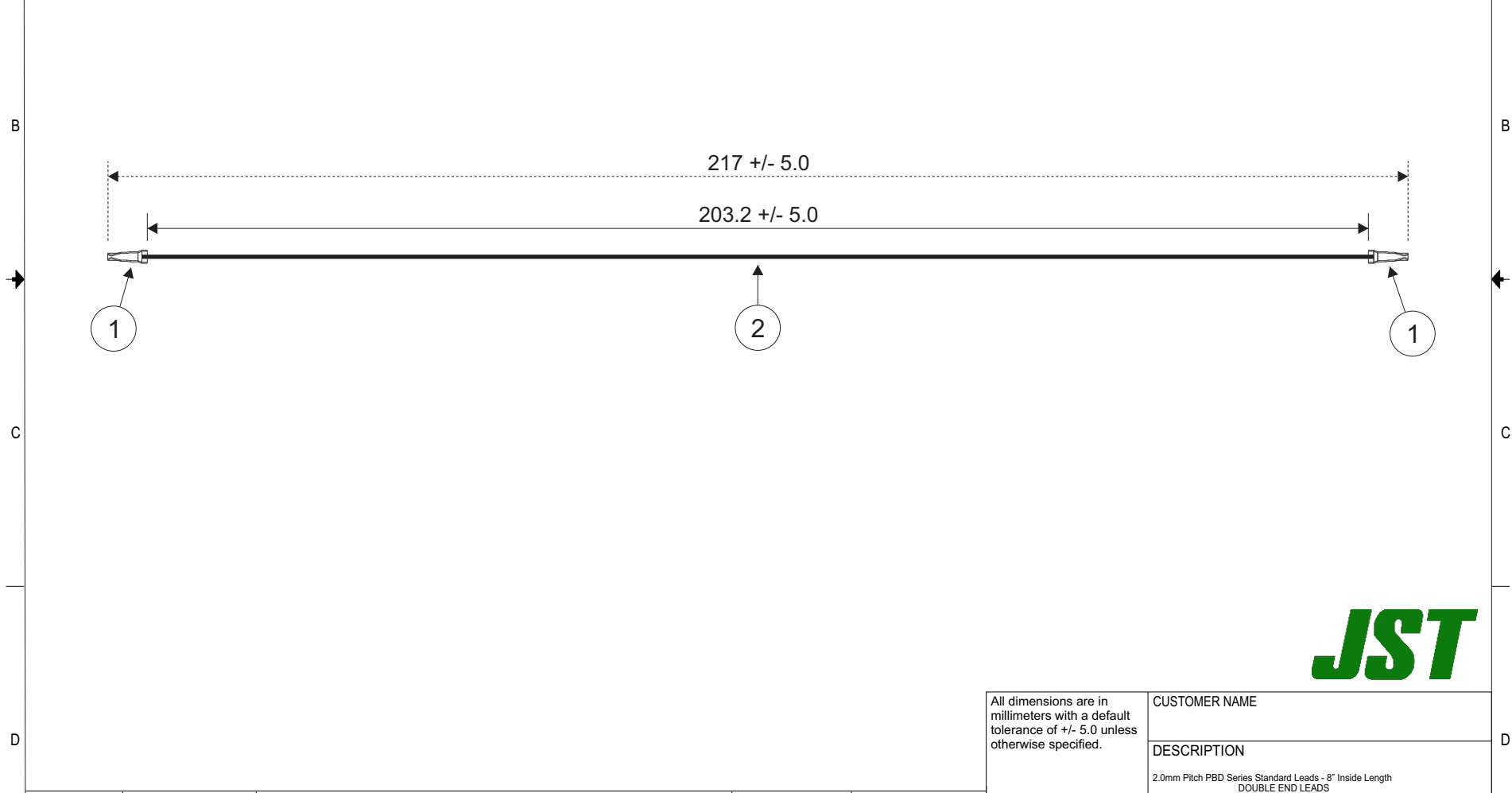


THIS DRAWING CONTAINS INFORMATION THAT IS PROPRIETARY TO J.S.T. AND SHALL NOT BE USED OR SHOWN WITHOUT WRITTEN PERMISSION.

Item No.	Part No.	Description
1	SPBD-001T-P0.5	PBD Connector Contact
2	UL1061, 22 AWG	Black

Electrical Specifications
Current: 3AAC/DC
Voltage: 100V AC/DC

APPLICABLE HOUSINGS	
NO. OF CIRCUITS	HOUSING PART NO.
16	PBDP-16V-S
20	PBDP-20V-S
30	PBDP-30V-S



All dimensions are in millimeters with a default tolerance of +/- 5.0 unless otherwise specified.	CUSTOMER NAME			
	DESCRIPTION 2.0mm Pitch PBD Series Standard Leads - 9" Inside Length DOUBLE END LEADS			
Drawn By: Larissa Mosley	SIZE	CUSTOMER PART NO.	PART NO.	REV
Checked By: Steven Pilkington	SCALE 1:1	DRAWING NO. GAM-714	APBDPBD22K203	DATE 2/5/2019

ZONE	REV	DESCRIPTION	DATE	APPROVED