

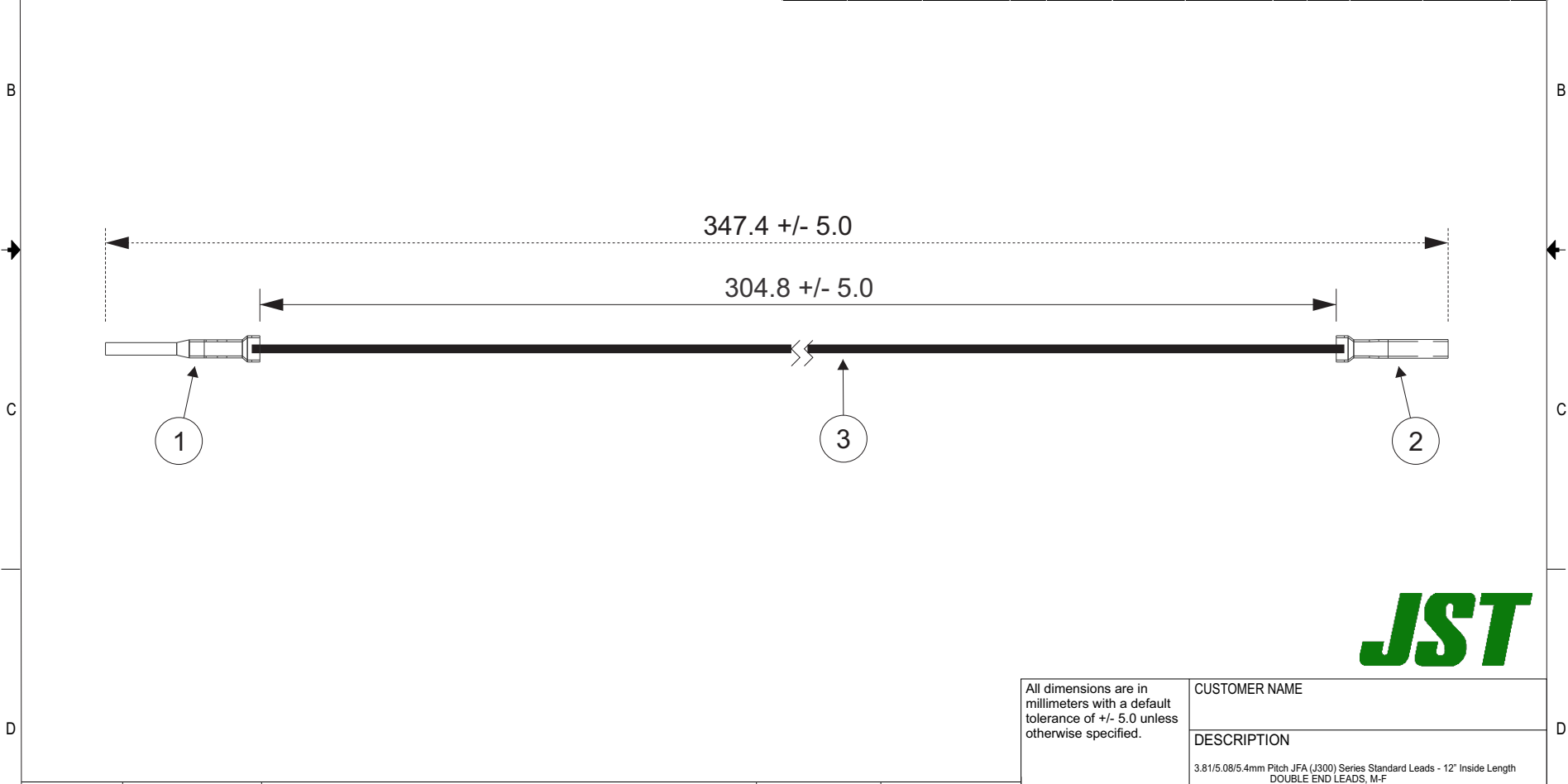
THIS DRAWING CONTAINS INFORMATION THAT IS PROPRIETARY TO J.S.T. AND SHALL NOT BE USED OR SHOWN WITHOUT WRITTEN PERMISSION.

Item No.	Part No.	Description
1	SF3M-41GF-M2.0N	JFA Connector Male Contact
2	SF3F-41GF-P2.0	JFA Connector Female Contact
3	UL1007, 16 AWG	Black

<u>Electrical Specifications</u>	
Current: MAX 7.5AAC/DC	
Voltage: 3.81mm pitch - 250V AC/DC 5.08mm pitch - 600V AC/DC	

APPLICABLE HOUSINGS											
FOR MALE CONTACT						FOR FEMALE CONTACT					
TYPE	NO. OF CIRCUITS	HOUSING PART NO.	KEYING	TYPE	NO. OF CIRCUITS	HOUSING PART NO.	KEYING	TYPE	NO. OF CIRCUITS	HOUSING PART NO.	KEYING
FREE HANGING TYPE (SINGLE ROW)	3	F31MSF-03V-KX	X	FREE HANGING TYPE (DOUBLE ROW)	6	F32MDF-06V-KXX	XX	SINGLE ROW	3	F31FSS-03V-KX	X
		F31MSF-03V-KY	Y			F32MDF-06V-KYY	YY			F31FSS-03V-KY	Y
		F31MSF-04V-KX	X			F32MDF-06V-KXY	XY			F31FSS-04V-KX	X
	4	F31MSF-04V-KY	Y		12	F32MDF-12V-KXX	XX		5	F31FSS-04V-KY	Y
		F31MSF-05V-KX	X			F32MDF-12V-KYY	YY			F31FSS-05V-KX	X
	5	F31MSF-05V-KY	Y		6	F32MDP-06V-KXX	XX		6	F31FSS-05V-KY	Y
		F31MSF-08V-KX	X			F32MDP-06V-KYY	YY			F31FSS-06V-KX	X
	8	F31MSF-08V-KY	Y		12	F32MDP-06V-KXY	XY		8	F31FSS-06V-KY	Y
		F31MSF-10V-KX	X			F32MDP-12V-KXX	XX			F31FSS-08V-KX	X
	10	F31MSF-10V-KY	Y		20	F32MDP-12V-KYY	YY		10	F31FSS-08V-KY	Y
F31MSP-03V-KX		X	F32MDP-12V-KXY	XY		F31FSS-10V-KX	X				
PANEL MOUNTING TYPE (SINGLE ROW)	3	F31MSP-03V-KY	Y	PANEL MOUNTING TYPE (DOUBLE ROW)	6	F32MDP-20V-KXX	XX	DOUBLE ROW	6	F32FMS-06V-KXX	XX
		F31MSP-04V-KX	X			-	-			F32FMS-06V-KYY	YY
		F31MSP-04V-KY	Y			-	-			F32FMS-06V-KXY	XY
	4	F31MSP-05V-KX	X		10	F32FMS-10V-KXX	XX		10	F32FMS-10V-KYY	YY
		F31MSP-05V-KY	Y			-	-			F32FMS-10V-KXY	XY
	5	F31MSP-08V-KX	X		12	F32FMS-12V-KXX	XX		12	F32FMS-12V-KYY	YY
		F31MSP-08V-KY	Y			-	-			F32FMS-12V-KXY	XY
	8	F31MSP-10V-KX	X		20	F32FMS-20V-KXX	XX		20	F32FMS-20V-KYY	YY
		F31MSP-10V-KY	Y			-	-			-	-
	-	-	-		-	-	-		-	-	-
-	-	-	-	-	-	-	-	-	-	-	

Note: Other housings and configurations are available. Please contact JST for details.



All dimensions are in millimeters with a default tolerance of +/- 5.0 unless otherwise specified.		CUSTOMER NAME			
		DESCRIPTION			
		3.81/5.08/5.4mm Pitch JFA (J300) Series Standard Leads - 12" Inside Length DOUBLE END LEADS, M-F			
Drawn By: Larissa Mosley	SIZE	CUSTOMER PART NO.	PART NO.	REV	
Checked By: Steven Pilkington	SCALE	ASF3MSF3F16K305			
	1:1	DRAWING NO. GAM-817	DATE 3/28/2019		

ZONE	REV	DESCRIPTION	DATE	APPROVED