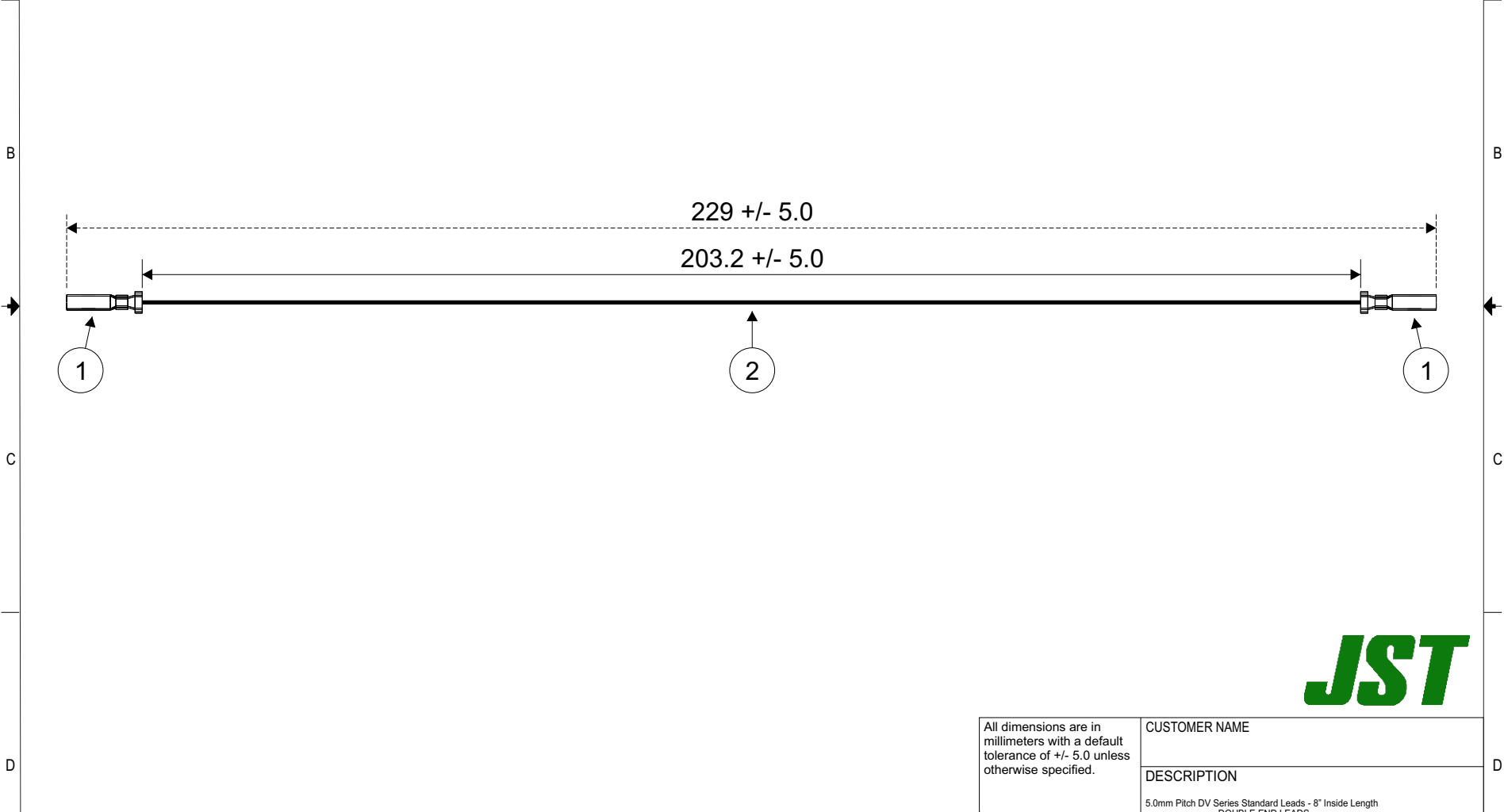


THIS DRAWING CONTAINS INFORMATION THAT IS PROPRIETARY TO J.S.T. AND SHALL NOT BE USED OR SHOWN WITHOUT WRITTEN PERMISSION.

Item No.	Part No.	Description
1	SDY-01T-P1.6ASV	DV Connector Contact
2	UL1007, 20 AWG	Black

Electrical Specifications
Current: 5.0A AC/DC
Voltage: 250V AC/DC

APPLICABLE HOUSINGS	
NO. OF CIRCUITS	HOUSING PART NO.
2	DVR-02V-S
3	DVR-03V-S
4	DVR-04V-S
5	DVR-05V-S
6	DVR-06V-S



All dimensions are in millimeters with a default tolerance of +/- 5.0 unless otherwise specified.	CUSTOMER NAME			
	DESCRIPTION 5.0mm Pitch DV Series Standard Leads - 8" Inside Length DOUBLE END LEADS			
Drawn By: Larissa Mosley	SIZE	CUSTOMER PART NO.	PART NO.	REV
Checked By: Steven Pilkington	SCALE 1:1	DRAWING NO. GAM-822	ADV DV20K203	DATE 3/29/2019

ZONE	REV	DESCRIPTION	DATE	APPROVED
1				