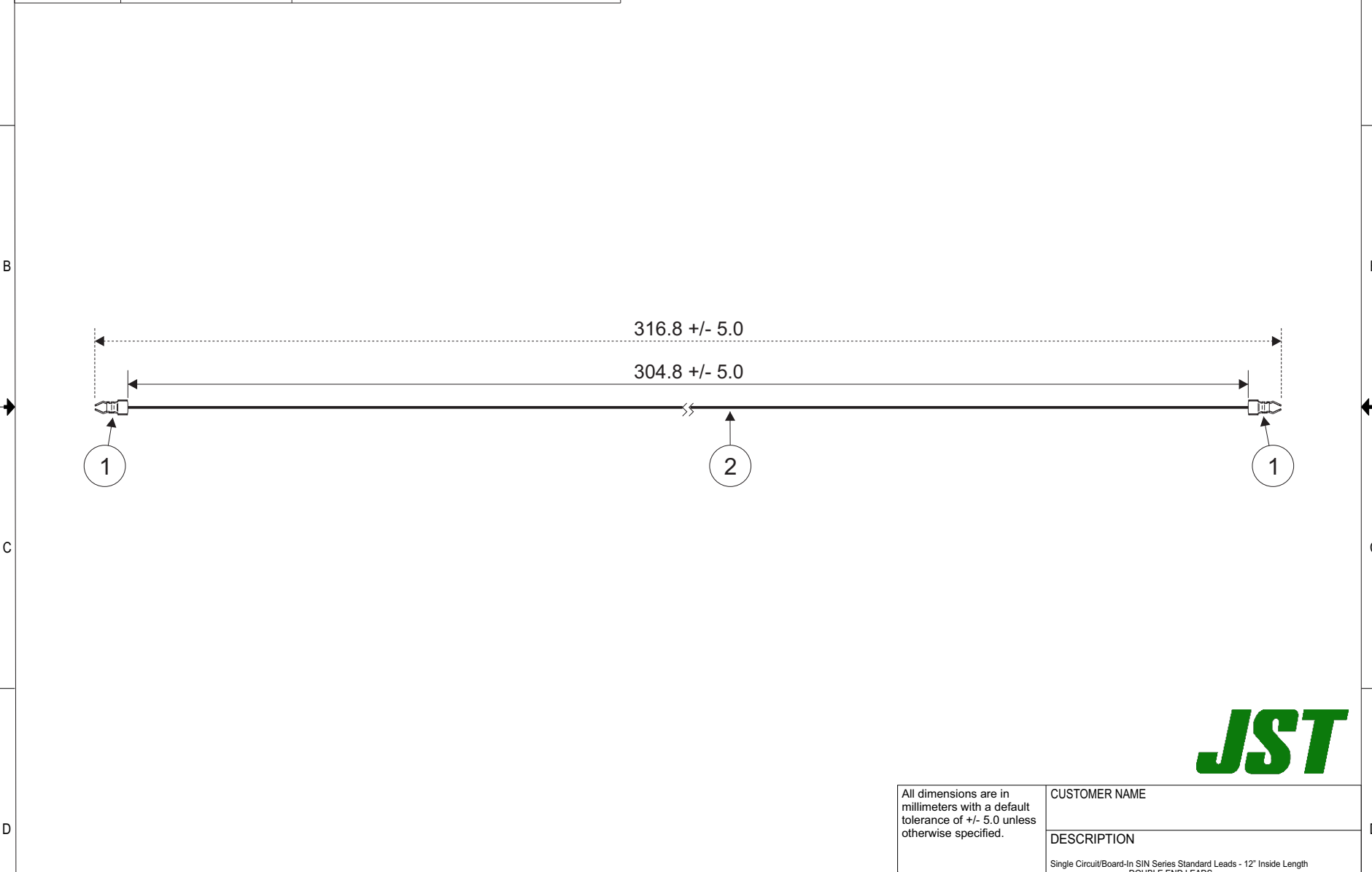


THIS DRAWING CONTAINS INFORMATION THAT IS PROPRIETARY TO J.S.T. AND SHALL NOT BE USED OR SHOWN WITHOUT WRITTEN PERMISSION.

1	2	3	4	5	6	7	8	
Item No.	Part No.	Description						Electrical Specifications
1	SIN-002T-1.2N	SIN Contact						Current: 4A AC/DC
2	UL1061, 26 AWG	Black						



All dimensions are in millimeters with a default tolerance of +/- 5.0 unless otherwise specified.

CUSTOMER NAME

DESCRIPTION
Single Circuit/Board-In SIN Series Standard Leads - 12" Inside Length
DOUBLE END LEADS

Drawn By:
Larissa Mosley
Checked By:
Steven Pilkington

SIZE	CUSTOMER PART NO.	PART NO.	REV
		ASIN12NSIN12N26K305	
SCALE	DRAWING NO.	DATE	
1:1	GAM-902	5/2/2019	

ZONE	REV	DESCRIPTION	DATE	APPROVED

1	2	3	4	5	6	7	8
---	---	---	---	---	---	---	---