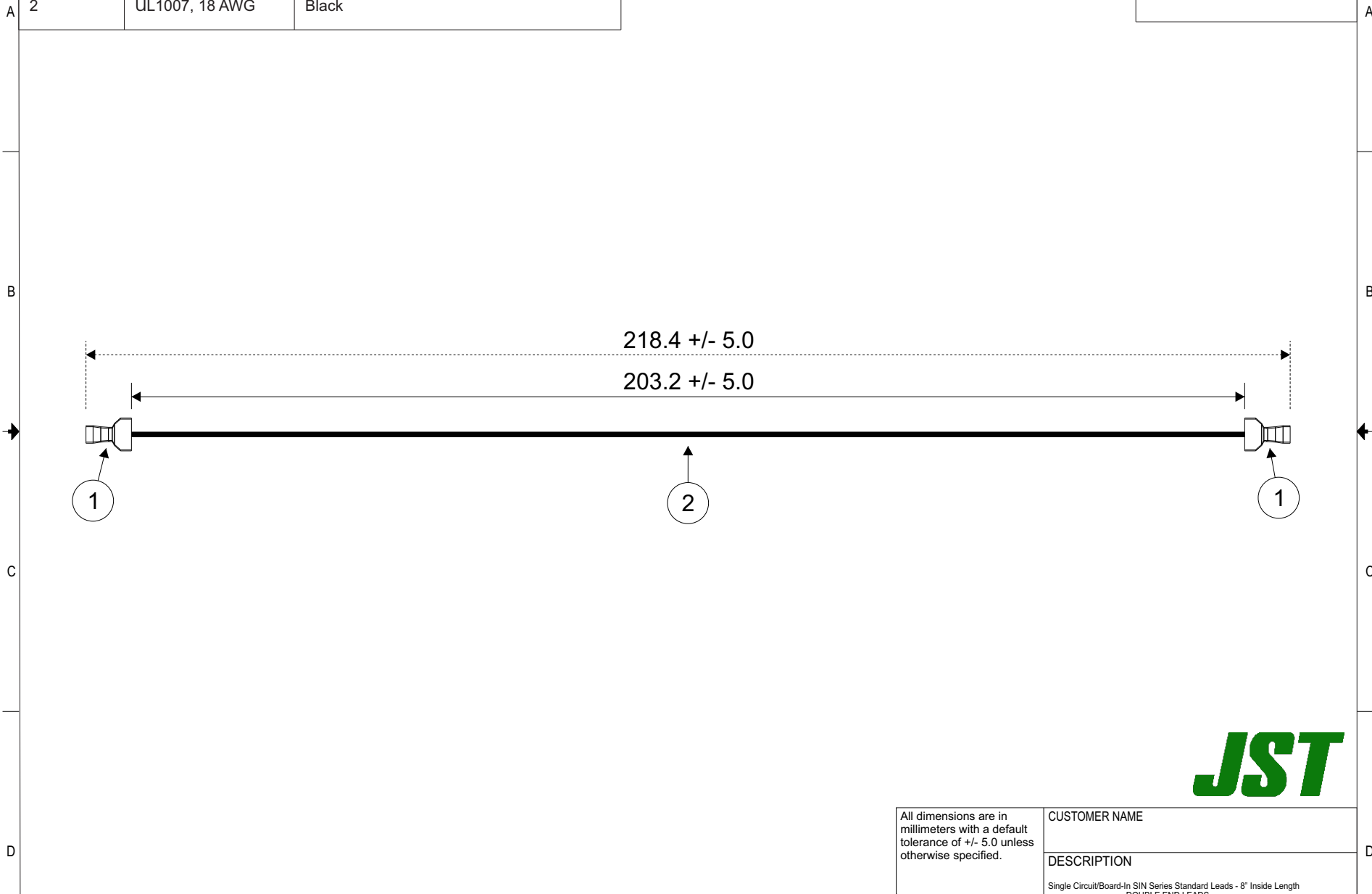


THIS DRAWING CONTAINS INFORMATION THAT IS PROPRIETARY TO J.S.T. AND SHALL NOT BE USED OR SHOWN WITHOUT WRITTEN PERMISSION.

Item No.	Part No.	Description
1	SIN-21T-1.8S	SIN Contact
2	UL1007, 18 AWG	Black

Electrical Specifications

Current: 15A AC/DC



All dimensions are in millimeters with a default tolerance of +/- 5.0 unless otherwise specified.	CUSTOMER NAME			
	DESCRIPTION Single Circuit/Board-In SIN Series Standard Leads - 8" Inside Length DOUBLE END LEADS			
Drawn By: Larissa Mosley	SIZE	CUSTOMER PART NO.	PART NO.	REV
Checked By: Steven Pilkington	SCALE 1:1	DRAWING NO. GAM-930	ASIN18SSIN18S18K203	DATE 5/6/2019

ZONE	REV	DESCRIPTION	DATE	APPROVED
1				
2				
3				
4				