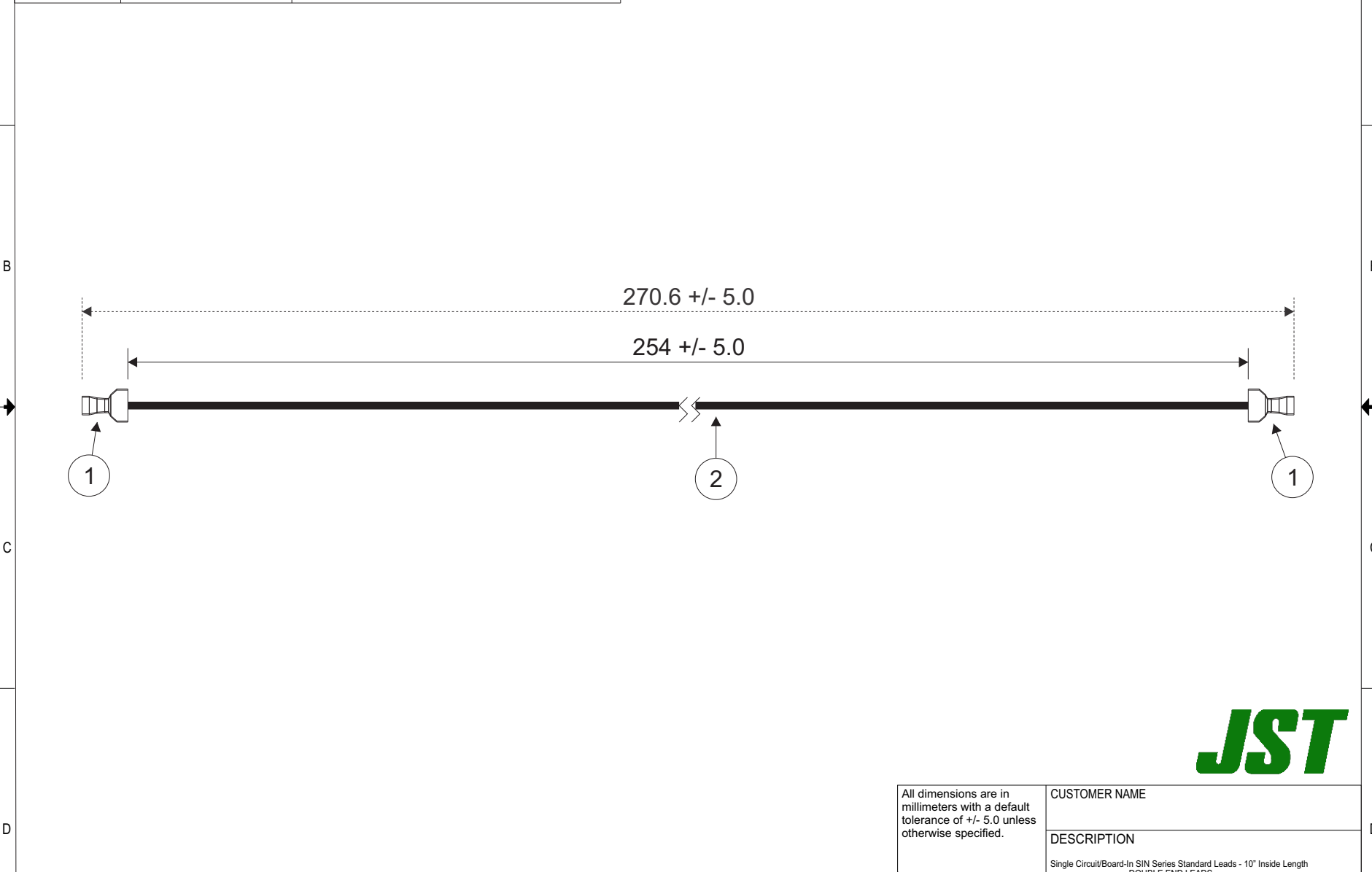


THIS DRAWING CONTAINS INFORMATION THAT IS PROPRIETARY TO J.S.T. AND SHALL NOT BE USED OR SHOWN WITHOUT WRITTEN PERMISSION.

Item No.	Part No.	Description	Electrical Specifications
1	SIN-61T-2.6S	SIN Contact	Current: 27A AC/DC
2	UL1015, 14 AWG	Black	



All dimensions are in millimeters with a default tolerance of +/- 5.0 unless otherwise specified.

CUSTOMER NAME

DESCRIPTION
Single Circuit/Board-In SIN Series Standard Leads - 10" Inside Length
DOUBLE END LEADS

Drawn By:
Larissa Mosley
Checked By:
Steven Pilkington

SIZE	CUSTOMER PART NO.	PART NO.	REV
		ASIN26SIN2614K254	
SCALE	DRAWING NO.	DATE	
1:1	GAM-943	5/7/2019	

ZONE	REV	DESCRIPTION	DATE	APPROVED