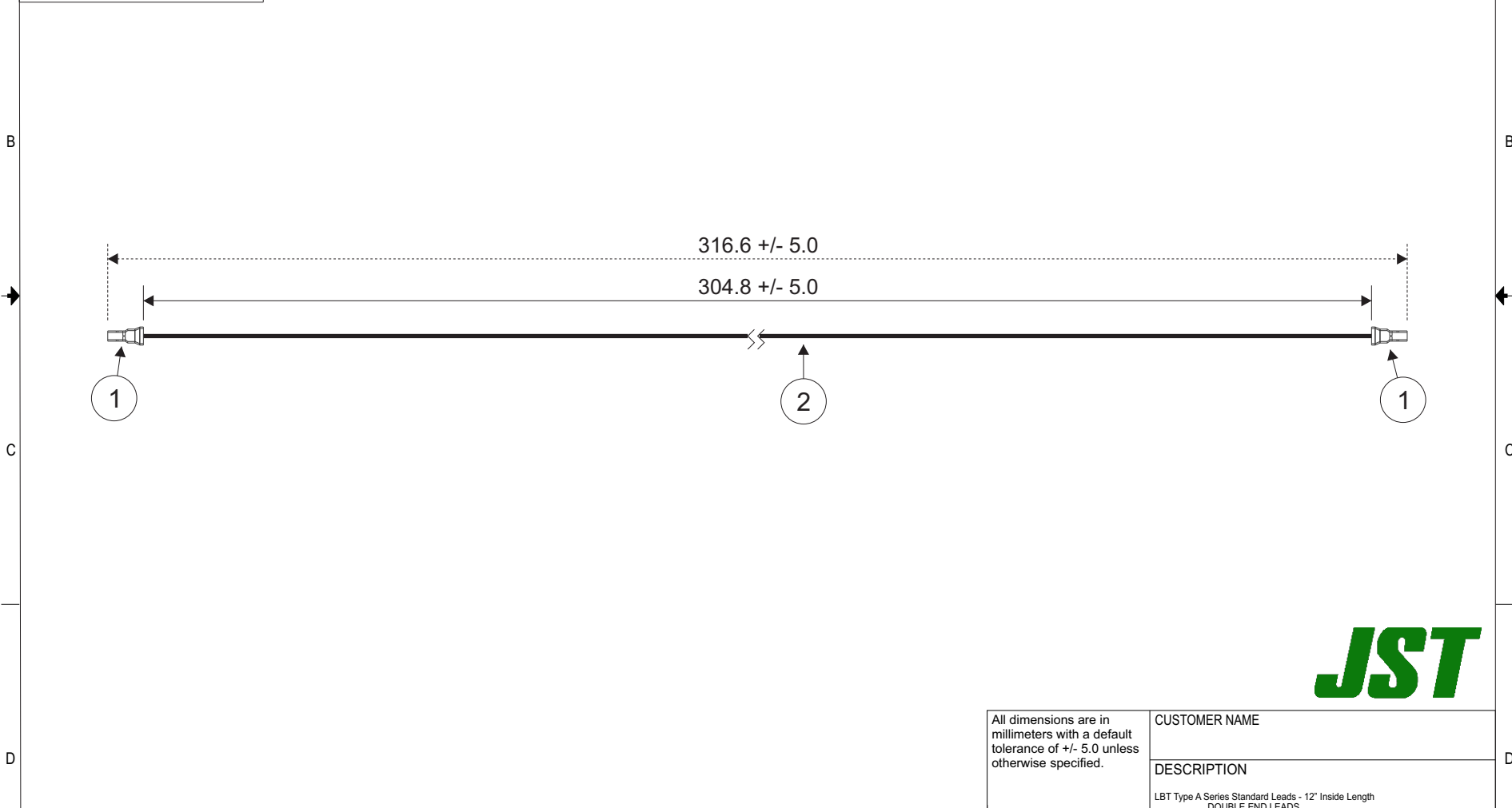


THIS DRAWING CONTAINS INFORMATION THAT IS PROPRIETARY TO J.S.T. AND SHALL NOT BE USED OR SHOWN WITHOUT WRITTEN PERMISSION.

Item No.	Part No.	Description
1	SLBTAD-01T-M0.5	LBT Connector Contact
2	UL1061, 20 AWG	Black

Electrical Specifications
Current: 7AAC/DC
Voltage: 50V AC/DC

APPLICABLE HOUSINGS		
NO. OF CIRCUITS	HOUSING PART NO.	
	POWER SUPPLY	SIGNAL
2	7	LBTAR-09V-2K-K(HF)
	5	LBTAR-07V-2K-K(HF)
	3	LBTAR-05V-2K-K(HF)
	1	LBTAR-03V-2K-K(HF)



All dimensions are in millimeters with a default tolerance of +/- 5.0 unless otherwise specified.	CUSTOMER NAME			
	DESCRIPTION LBT Type A Series Standard Leads - 12" Inside Length DOUBLE END LEADS			
Drawn By: Larissa Mosley	SIZE	CUSTOMER PART NO.	PART NO.	REV
Checked By: Steven Pilkington	SCALE 1:1	DRAWING NO. GAM-968	ALBTALBTA20K305	DATE 5/20/2019

ZONE	REV	DESCRIPTION	DATE	APPROVED