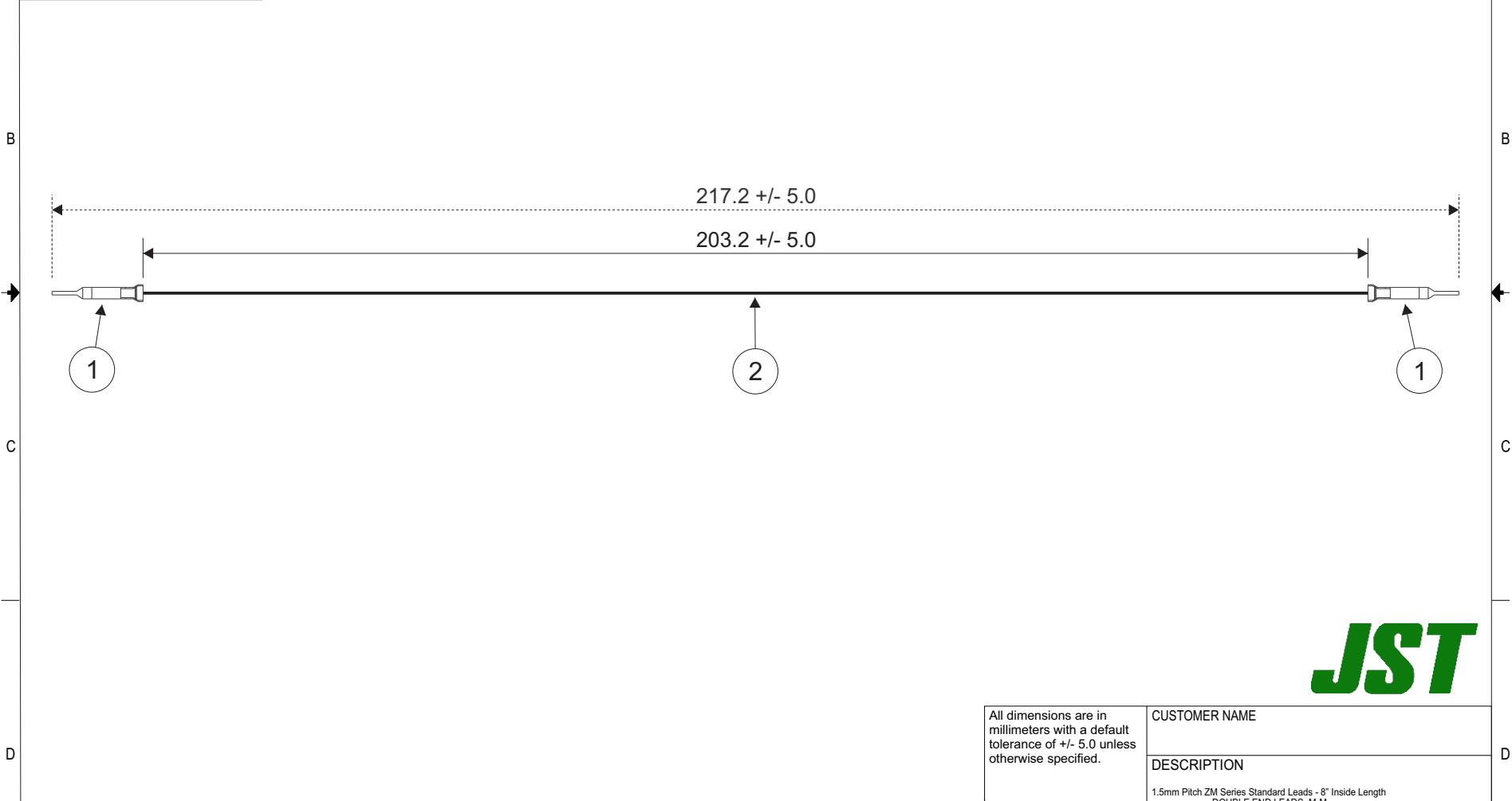


THIS DRAWING CONTAINS INFORMATION THAT IS PROPRIETARY TO J.S.T. AND SHALL NOT BE USED OR SHOWN WITHOUT WRITTEN PERMISSION.

Item No.	Part No.	Description
1	SMM-003T-P0.5	ZM Connector Contact
2	UL1571, 28 AWG	Black

Electrical Specifications
Current: 0.7A AC/DC
Voltage: 50V AC/DC

APPLICABLE HOUSINGS	
NO. OF CIRCUITS	HOUSING PART NO.
2	ZMR-02
3	ZMR-03
9	ZMR-09
13	ZMR-13



All dimensions are in millimeters with a default tolerance of +/- 5.0 unless otherwise specified.	CUSTOMER NAME			
	DESCRIPTION 1.5mm Pitch ZM Series Standard Leads - 8" Inside Length DOUBLE END LEADS, M-M			
Drawn By: Larissa Mosley	SIZE	CUSTOMER PART NO.	PART NO.	REV
Checked By: Steven Pilkington	SCALE 1:1	DRAWING NO. GAM-972	ASMMSMM28K203	DATE 5/21/2019

ZONE	REV	DESCRIPTION	DATE	APPROVED
1				